

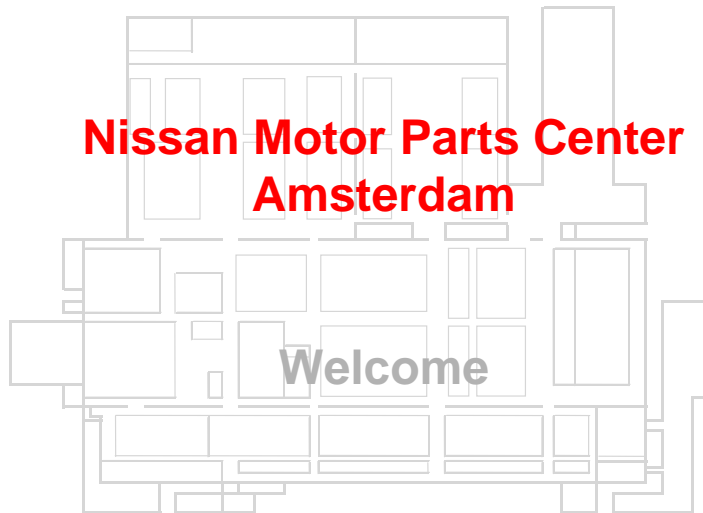
---

Nissan Motor Parts Center BV  
Amsterdam



---

**Nissan Motor Parts Center**  
**Amsterdam**



Welcome



---

## Nissan International S.A.

European Head office in Rolle, Switzerland

### Production plants in Europe:

Sunderland UK:  
(Qashqai, Qashqai+2, Juke & Note)

Barcelona Spain:  
(X-Batch [Primastar], NV200, Pathfinder, Navara)

Avila Spain:  
(Atleon & Cabstar)

- > 4,500,000 Nissan customers in Europe



---

## Nissan International After Sales

- Vice-President Peter Cornelis
- NISA, Rolle, Switzerland
  - Sales Operations
  - Planning
- NISA, Montigny, France
  - After sales Marketing
  - Product Engineering
  - Quality Assurance
  - Purchasing
- NMPC BV, Amsterdam
  - After Sales **Supply & Distribution**
  - ISD & HR
  - Warranty
  - Nissan Forklift & Trading EU



---

## Nissan Motor Parts Center in a bird's-eye view



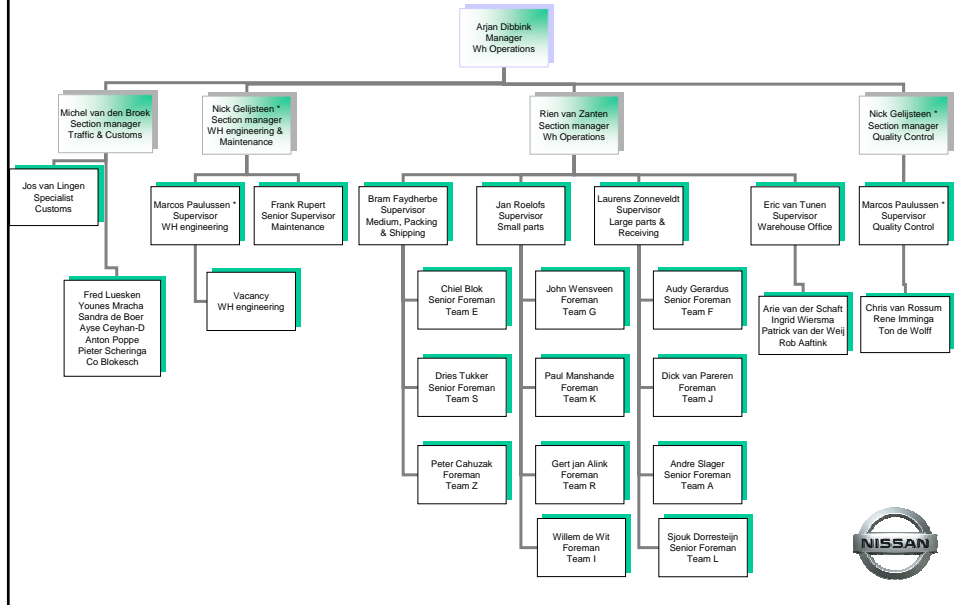
---

## Spare parts



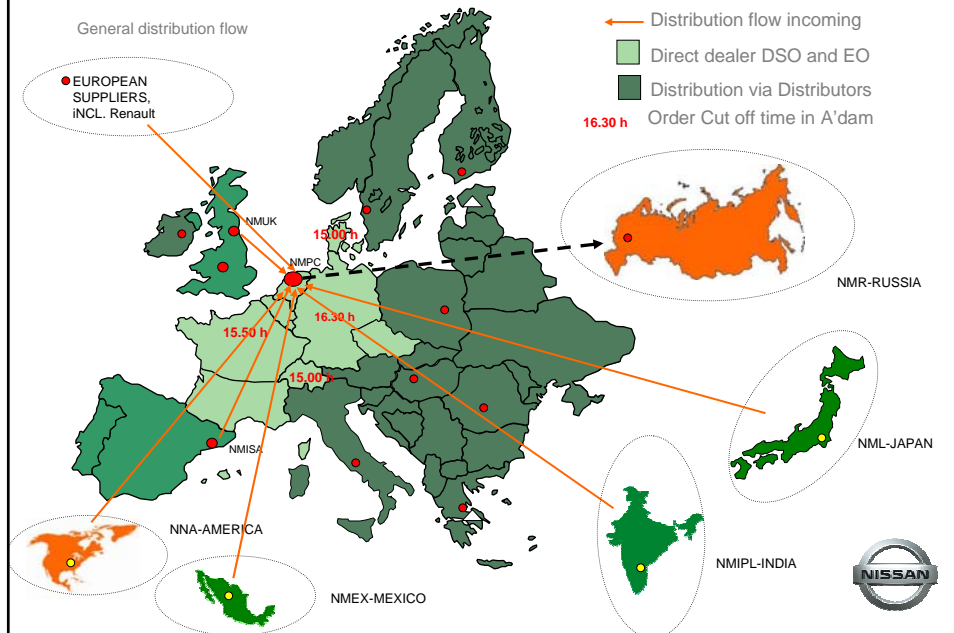
# Warehouse Organization

(per 01/10/10)



# Nissan Motor Parts Center BV

General distribution flow



## NMPC Amsterdam HISTORY:

- 83-05 NMPC Established**
- 85-07 First shipments to Distributors
- 88-06 1st Warehouse Expansion (Dynamism)
- 89-04 Establishment Nissan Europe NV Amsterdam
- 92-01 2nd Warehouse Expansion
- 92-10 Direct deliveries to Dutch Dealers
- 94=>07 Direct extension to Belgium, Germany, France, Switzerland, Denmark & Czech
- 99-03 Alliance with Renault
- 01-10 Combined UK Warehouse Nissan-Renault
- 02-11 Nissan Europe SAS in Paris
- 04-01 Kitting operation
- 05-06 Opening Russian & Hungarian warehouse
- 06-01 Warehouse Oslo closed, new warehouse in Gothenburg
- 07-01 Standard dealer ordering system (Fra/Hol/Swi)
- 08-08 Opening/start of new larger Russian warehouse in Kulon
- 08-12 New warehouse in Poland (Natolin)
- 09-10 Ukraine dealers delivery



## Nissan Motor Parts Center BV

### Key Figures

- 113 (Fork) trucks
- 202 Warehouse Staff
- 90,000 M<sup>2</sup> Floor space
- 65 million Euro stock value
- 96 % Service level to Dealers
- 29,200 Lines out to Dealers & RBU's
- 3.07 Months of Supply (incl. in-transit)
- 150,000 different part numbers on hand



---

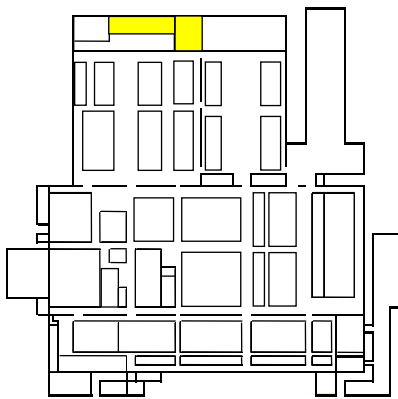
## Logistics tasks performed in our Nissan warehouse

- Receiving, unpacking, checking and sorting
- Kitting, Packaging
- In depot transportation to dedicated storage area's for large, medium and small sized parts.
- Shelving of parts at the storage locations
- Picking of parts, ordered by our RBU's and Dealers
- Sorting, packing, preparing for shipment
- Loading of trucks and vans



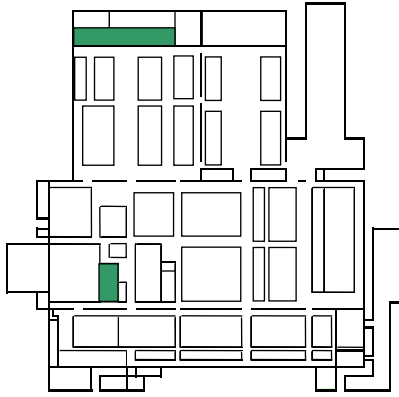
---

## GOODS RECEIVING



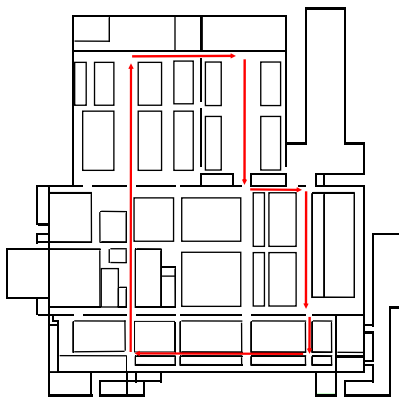
---

## UNPACKING & SORTING LARGE, MEDIUM AND SMALL PARTS



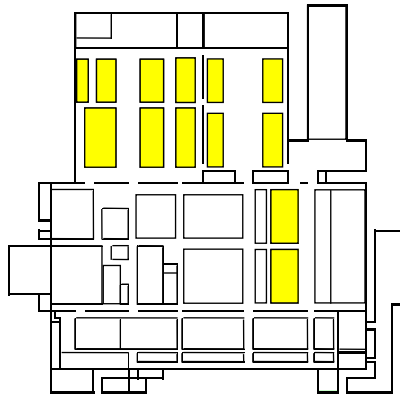
---

## IN DEPOT TRANSPORT



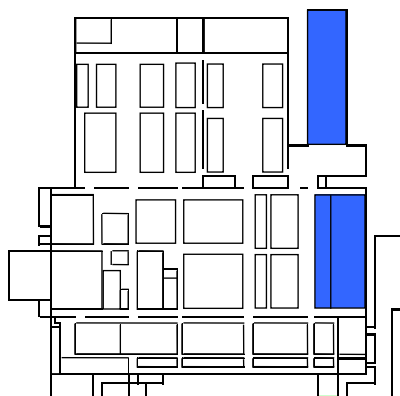
---

## STORAGE AREA FOR LARGE PARTS

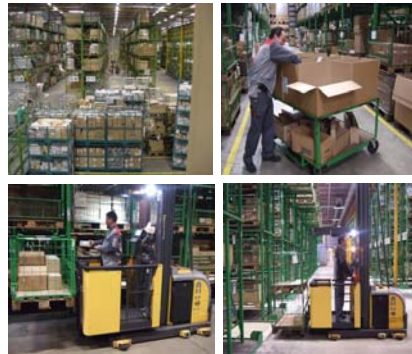
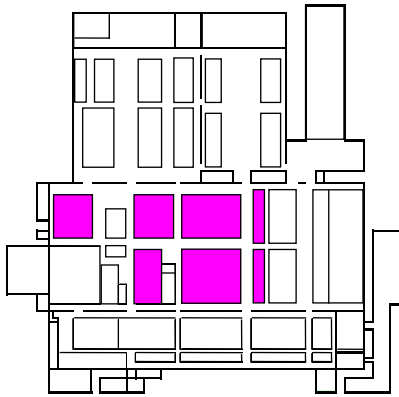


---

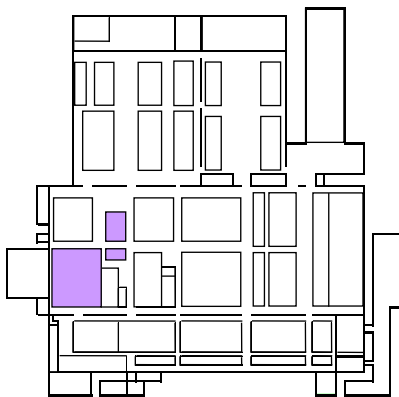
## STORAGE AREA FOR LARGE PARTS



## STORAGE AREA MEDIUM PARTS

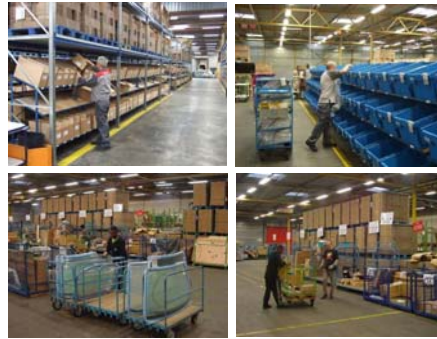
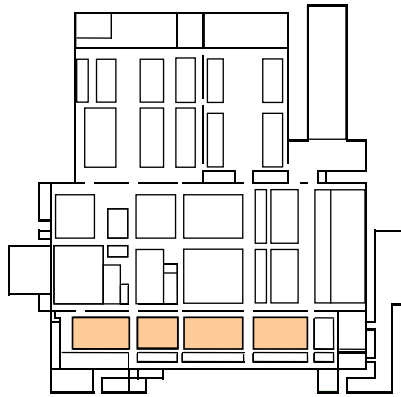


## STORAGE AREA SMALL PARTS



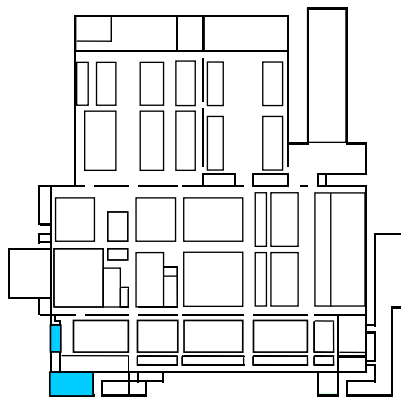
---

## SORTING & PACKING DEALER ORDERS



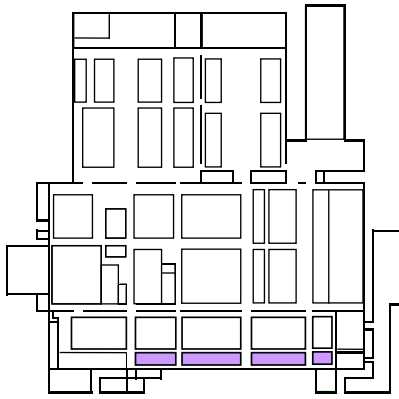
---

## SHIPPING DEALER ORDERS



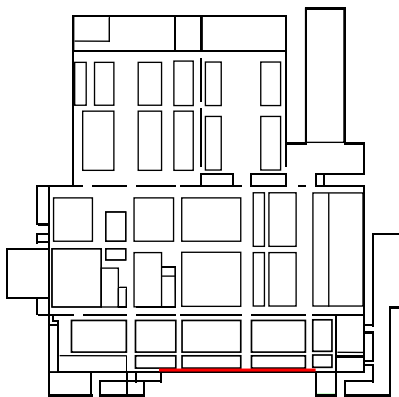
---

## RBU's PARTS READY FOR SHIPMENT



---

## LOADING OF RBU's PARTS



---

**Parts on their way to >4.5 million Nissan  
customers in Europe**



---

**Nissan Motor Parts Center BV  
Amsterdam**

